



Let **UK** Home

1 Bedrooms

Flat

Located
in Manchester

£1,650 Per Month



pmadmin@letukhome.co.uk

<https://www.letukhome.co.uk/>

01615219812



11 Silvercroft Street Manchester

M15 4ZP



Let UK Home are excited to offer this stunning one bedroom apartment in Three60, the cylindrical skyscraper in Manchester.

This property comprises a large bright open plan kitchen and living room, one double bedroom with wardrobe, a large family sized bathroom and ample storage.

Residents of the development will have access to concierge, private gym & spa, residents lounge & private meeting/dining rooms.

The development is surrounded by many prestigious universities and rich educational resources. Internationally renowned institutions such as the University of Manchester (UOM), Manchester Metropolitan University (MMU) and the Royal Northern College of Music (RNCM) are all within walking distance.

The closest train station to the property is Deansgate station which is just a few minutes walk from Three60. Manchester Piccadilly Station and Manchester Oxford Road station are both within walking distance of the development.

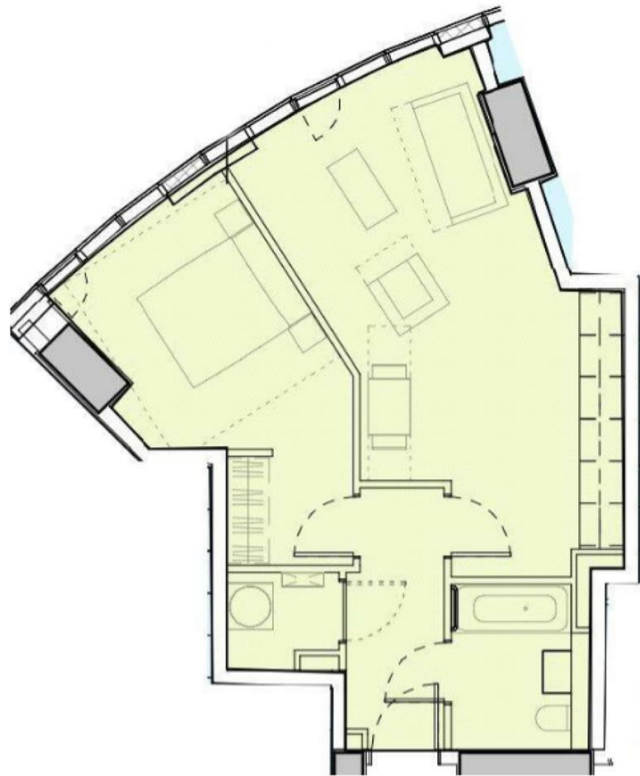
Right at your doorstep, you can enjoy bustling restaurants, bars, and the picturesque Castletfield canal walk. This development is adjacent to Deansgate commercial street, along which you will find famous locations such as the John Rylands Library, Beetham Tower (a landmark), Manchester Cathedral, and Selfridges department store, with numerous well-known shops, providing one-stop options for dining, drinking, and entertainment. The surrounding area has multiple large shopping malls with all major brand stores available. Nearby, there are also

11 Silvercroft Street Manchester

£1,650 Per Month

- 3rd Floor
- 24h Security
- Yoga Room
- Co-working Space
- Private Dining Room
- Concierge Service
- The Gym
- Sauna & Steam Room
- Residents Lounge
- EPC Rating: B





Total floor area 53 square metres



Let **UK** Home

1/F, St James Tower 7 Charlotte
Street
Manchester
M1 4DZ

01615219812

pmadmin@letukhome.co.uk

Council Tax Band: C

Local Authority:

Agents Note: Whilst every care has been taken to prepare these particulars, they are for guidance purposes only. All measurements are approximate and are for general guidance purposes only and whilst every care has been taken to ensure their accuracy, they should not be relied upon and potential buyers/tenants are advised to recheck the measurements.

Energy Efficiency Rating		Current	Potential
Very energy efficient - lower running costs			
(92 plus) A			
(81-91) B		83	83
(69-80) C			
(55-68) D			
(39-54) E			
(21-38) F			
(1-20) G			
Not energy efficient - higher running costs			
England & Wales	EU Directive 2002/91/EC		

<https://www.letukhome.co.uk/>